

Sydney Fringe Hub Technical Specifications

PLEASE NOTE: Technical Specifications may change as venues are programmed



HOW WE PROGRAM

If you have preferenced to be programmed in a Fringe Hub we will work with you to ensure suitability and a great program slot for you. Though it isn't guaranteed we will do our best to accommodate within our parameters

So what is a Fringe Hub?

Sydney Fringe Hub

A Sydney Fringe Hub is a venue that is managed by Sydney Fringe and programmed by us. We provide set technical specs, front of house staff and double or sometimes triple bill each evening. This makes the venues alive and abuzz during the festival. It takes much of the thinking out of being at Fringe and means you can focus on the show.

Some things to keep in mind:

- Shows in hubs need to be 60min or under
- You will be sharing the venue with another show (double or triple billed)
- In multi space venues there may be noise bleed from other space

Benefits:

- Sydney Fringe programs the spaces; we do the heavy lifting of show times, bump ins and performance schedule.
- We provide front of house staff and volunteers to guide your audience and manage ticketing
- There are set technical specs for each space
- Most of our hubs have multiple shows across the month so increased chances for you to network, meet other artists and grow your audience.

Food for thought: if you are a Fringe newcomer a Hub is a great choice as we will help guide you, if you need.

EMERGING ARTIST SHAREHOUSE



ERSKINEVILLE TOWN HALL

COUNCIL CHAMBERS

PLEASE NOTE: Technical specifications are subject to change.

FOUR WEEKS

GOOD

SYDNEY FRINGE FESTIVAL
FOUR WEEKS OF THE
UTTERLY UNBELIEVABLE

1-30 SEPTEMBER
PAINT THE
TOWN RED

EMERGING ARTIST
SHAREHOUSE
ERSKINEVILLE
TOWN HALL 5-30 SEP

I DREAM OF JAZZ	THE BALD AND BEAUTIFUL
IT'S WHAT SHE WOULD HAVE WANTED	THE LOU CHAPMAN SHOW
JERONIA SETTO WISH	THE UNUSUAL MAN
LE COOK	THE WEIRD SISTERS
NO GREAT EXPECTATIONS	TRAUMA BONDING
PERSEUS	WEIRD AL'S COUSIN
WHALE	
WHY RUNS THE ABHISARIKA	

EMERGING ARTIST SHAREHOUSE

The Emerging Artist Sharehouse is perfect for fringe newcomers; emerging artist, new ideas, first tries, rough and ready and low fi work. It is the fringiest of fringe venues and is our longest running venue

Address:

Erskineville Town Hall- 104 Erskineville Road, Erskineville, 2043
(Inner West Precinct)

Spaces:

The Living Room, The Boom Boom Room, The Office, The Spare

Schedule:

Shows are programmed in 60 min slots for a full week run Tuesday-Saturday (5 shows) in one of three timeslots.

Available timeslots are 6:00pm, 7:30pm, & 9:00pm

The Spare Room is the only space which takes smaller runs

Facilities:

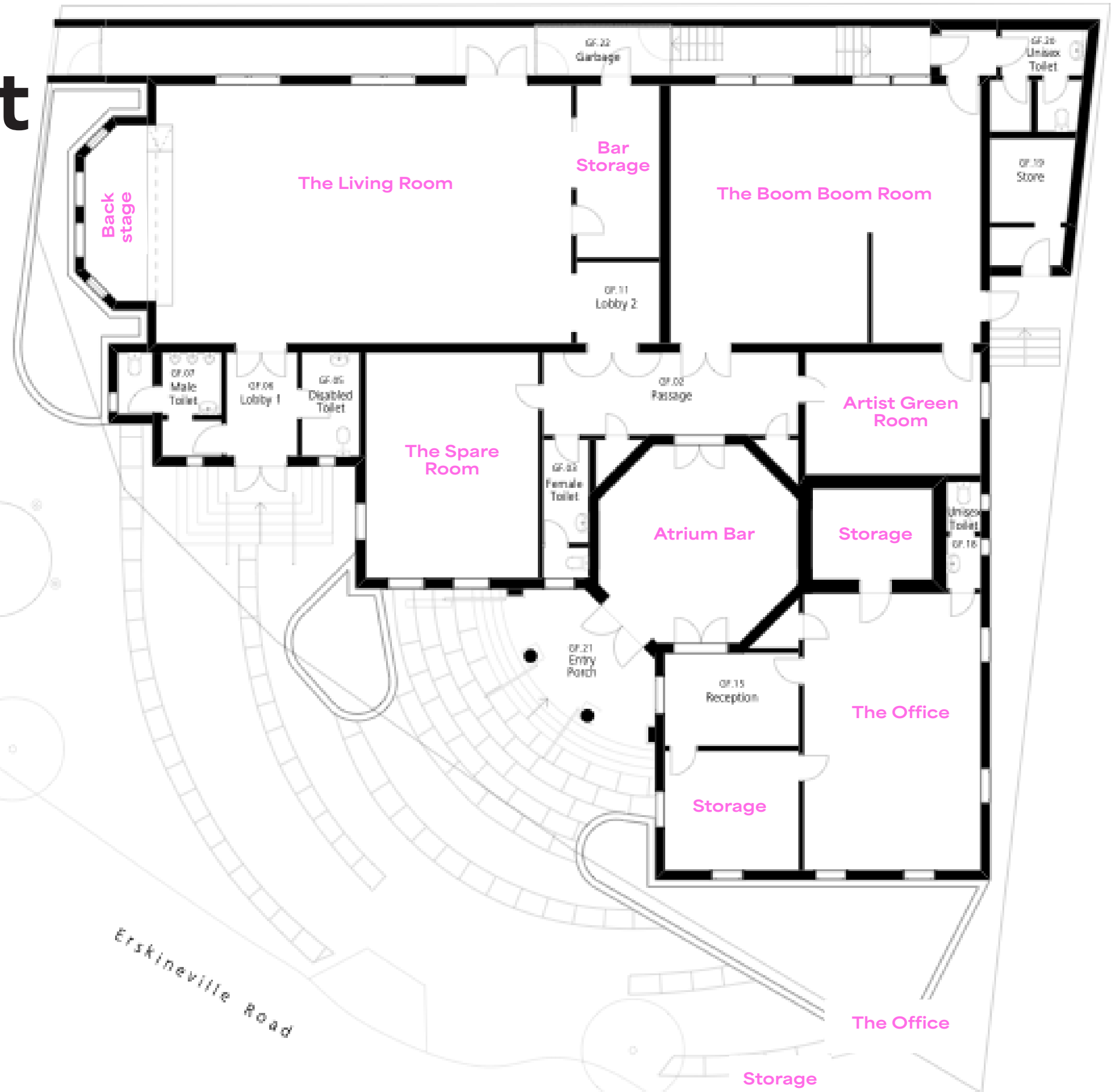
Atrium Bar, outdoor seating, accessible entrance and ramp, green room with kitchenette for artists, small storage shared amongst all spaces





Emerging Artist Sharehouse

Septimus Street





The Living Room

The Living Room is the largest of the four spaces in the Emerging Artist Sharehouse. The space playing space is a rectangle with audience on two sides like a L. There is a small backstage area and two exits for audiences. The floor is a polished wood. Curtains wrap the playing space.

Seating Capacity:

60

1 x two-tier riser of 40 black chairs front on to stage

1 x two-tier riser of 20 black chairs stage right of the stage.

Stage Size:

5m (w) x 2.4m (d)

Backstage area:

A nice tight space on one side of the stage.

Projection:

Projection is available in this room. Projector is mounted behind 40 chair riser and onto a free standing pull up screen.

Hire Rate:

30% Gross Box Office vs minimum hire per performance

Technician is provided in this space at an additional rate



Lighting Equipment

1x lighting desk (manual)

6x ILED PAR64

2x Litecraft Par 56

1x LED Profile

2 x T bar lighting trees

Audio Equipment

1x Analog sound desk

2x Behringer Active Speaker

3x SM58 Wired Vocal Mics

+ Stands

Blue Circle= Speakers
Yellow Circle= Lighting
Trees
Green= Seating bank
Pink= Curtain



PLEASE NOTE: Technical specifications are subject to change.



The Boom Boom Room

The Boom Boom Room is set as a carpeted raised stage with audience wrapping around. The room has a built in L shaped desk area which can't be removed and is used as a technical area to house the lighting and sound desk. Curtains wrap the playing space.

Seating Capacity:

40

Seating on both sides and centre of corner stage.

Stage Size:

4m (w) x 3m (d) x 0.3m (h)

The stage is a rectangle with a corner cut off

Backstage area:

There is a toilet in back right of the audience, artist only, and entrance to the green room back left. There is no backstage.

Projection:

Projection is available in this room at request.

Projector is mounted and projected onto wall to the right of the stage

Hire Rate:

30% Gross Box Office vs minimum hire per performance

Technician is provided in this space at an additional rate



Lighting Equipment

1x lighting desk (manual)

4x ILED PAR64

2x Litecraft Par 56

1x LED Profile

2 x T bar lighting trees

Audio Equipment

1x Analog sound desk

2x Behringer Active

Speaker

2x SM58 Wired Vocal Mics

+ Stands

Blue Circle= Speakers
Yellow Circle= Lighting
Trees
Green= Seating bank
Pink= Curtain



PLEASE NOTE: Technical specifications are subject to change.



The Office

The Office stage is separate from the other 3 rooms and so louder shows (Cabaret) will be suited to this space. A storage room is to the left of the stage as an additional entrance and a toilet in back left corner for artists.

Seating Capacity:

30

Front on seating with an aisle down the centre.

Stage Size:

5m (w) x 2.4m (d)

The stage area is carpeted and flat on the floor

Backstage area:

There is no backstage.

Projection:

Projection is available in this room at request.

Projector will be on a stand at the back and

projected onto a pull up banner.

Hire Rate:

30% Gross Box Office vs minimum hire per performance

Technician is provided in this space at an additional rate



Lighting Equipment

1x lighting desk (manual)

2x ILED PAR64

2x Litecraft Par 56

1x LED Profile

2 x T bar lighting trees

Audio Equipment

1x Analog sound desk

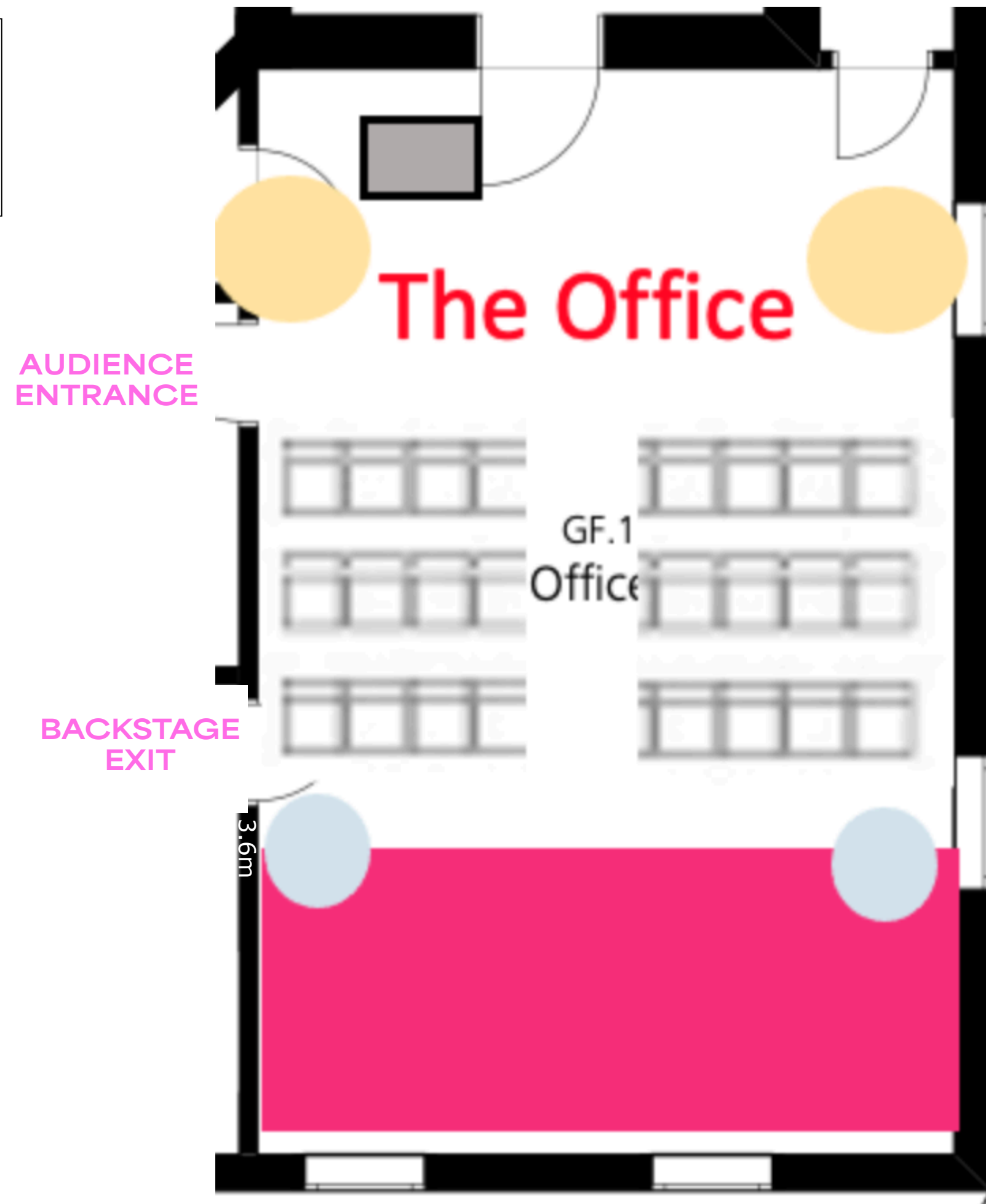
2x QSC K10 Active

Speaker

3x SM58 Wired Vocal Mics

+ Stands

Blue Circle= Speakers
Yellow Circle= Lighting
Trees
Green= Seating bank
Pink= Stage



PLEASE NOTE: Technical specifications are subject to change.



The Spare Room

The Spare Room is the smallest of all the rooms and is a small version of The Office. It is low fi but perfect for those who just want a simple space. Comedy, spoken word or simple theatre is great in this room. No backstage or exits apart from the main audience entrance. There is a simple curtain back drop behind the stage space.

Seating Capacity:

24

Front on seating with an aisle down the centre.

Stage Size:

5m (w) x 2.4m (d)

The stage area is carpeted and flat on the floor

Backstage area:

There is no backstage.

Projection:

Projection is available in this room at request. Projector will be on a stand at the back of the audience and projected onto a pull up banner on stage

Hire Rate:

330% Gross Box Office vs minimum hire per performance

Technician is provided in this space at an additional rate



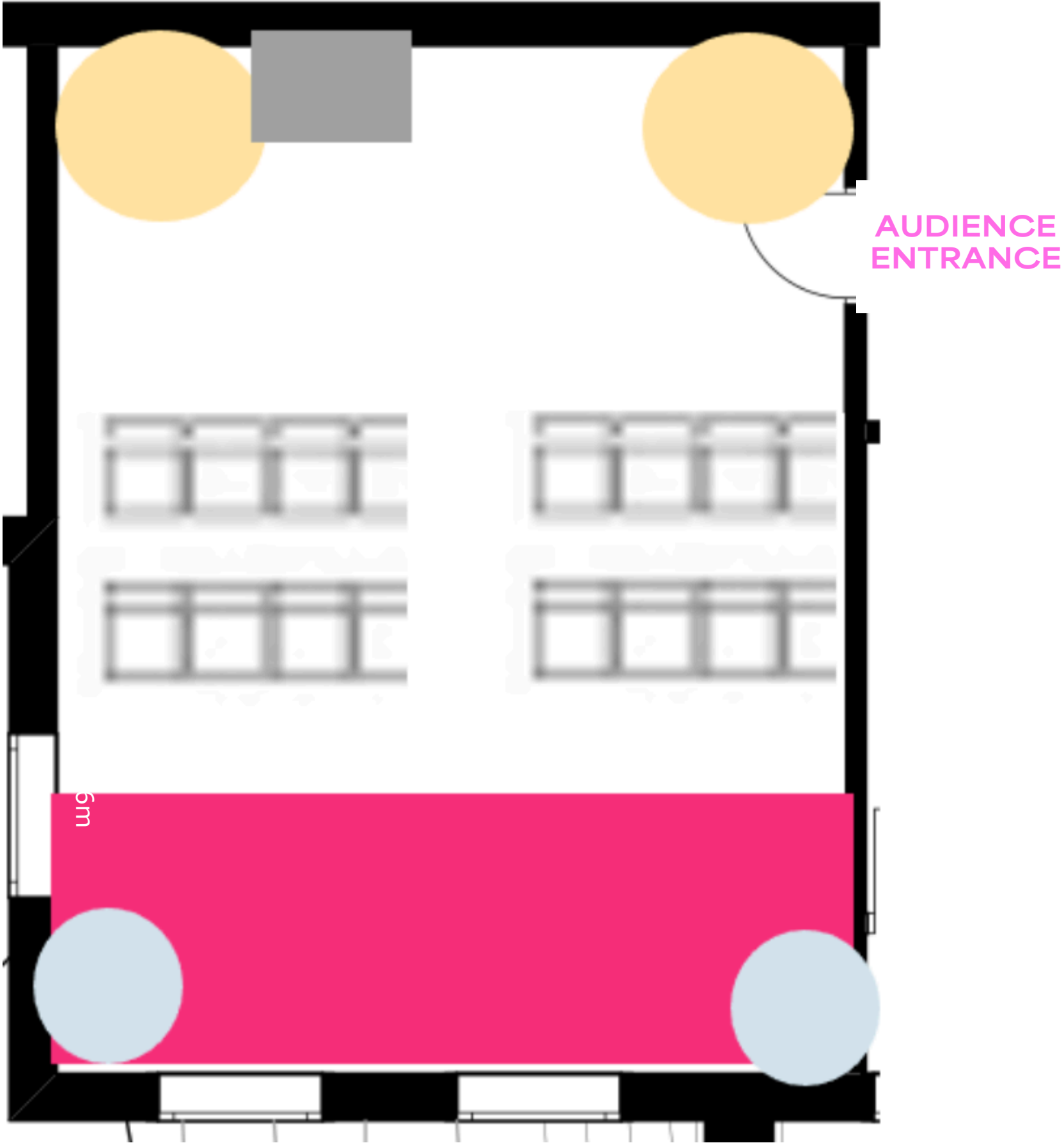
Lighting Equipment

1x lighting desk (manual)
2x ILED PAR64
2x Litecraft Par 56
2 x T bar lighting trees

Audio Equipment

1x Analog sound desk
2x QSC K10 Active
Speaker
1x SM58 Wired Vocal Mics
+ Stand

Blue Circle= Speakers
Yellow Circle= Lighting
Trees
Green= Seating bank
Pink= Stage



PLEASE NOTE: Technical specifications are subject to change.

CABARET HUB

Marrickville Town Hall

TOWN HALL
1921

SYDNEY FRINGE FESTIVAL

PLEASE NOTE: Technical specifications are subject to change.

CABARET HUB

The Cabaret Hub is similar to Emerging Artist Sharehouse, a pop up venue with to small performance spaces that are lo fi and perfect for small scale performances in the cabaret/ comedy/ theatre genres.

Address:

Marrickville Town Hall, 303 Marrickville Rd, Marrickville

Spaces:

The Safe Room, The Chambers, Main Hall (not available for programming)

Schedule:

Shows are programmed in 60 min slots for a full week run Tuesday-Saturday (5 shows) in one of three timeslots.

Available timeslots are 6:00pm, 7:30pm, & 9:00pm

Facilities:

Bar, outdoor seating, accessible entrance and ramp, green room, small storage shared amongst all spaces



Roland

The Safe Room

The Safe Room is the largest space in this activation and is named after to old council safe in the space. It is a raised stage with audience flat on the ground. It has free standing lighting and audio capabilities.

Seating Capacity:

50

Flat on the ground seating.

Stage Size:

4m (w) x3m (d)

Stage is raised 500mm

Backstage area:

There is an exit to the right of stage where audience enters and leads to the artists green room. The old safe to the right of stage can be used as quick change or to hold props.

Hire Rate:

30% Gross Box Office vs minimum hire per performance

Technician is provided in this space at an additional rate



Lighting Equipment

1x lighting desk (manual)

6x ILED PAR64

2x Litecraft Par 56

1x LED Profile

2 x T bar lighting trees

Audio Equipment

1x Analog sound desk

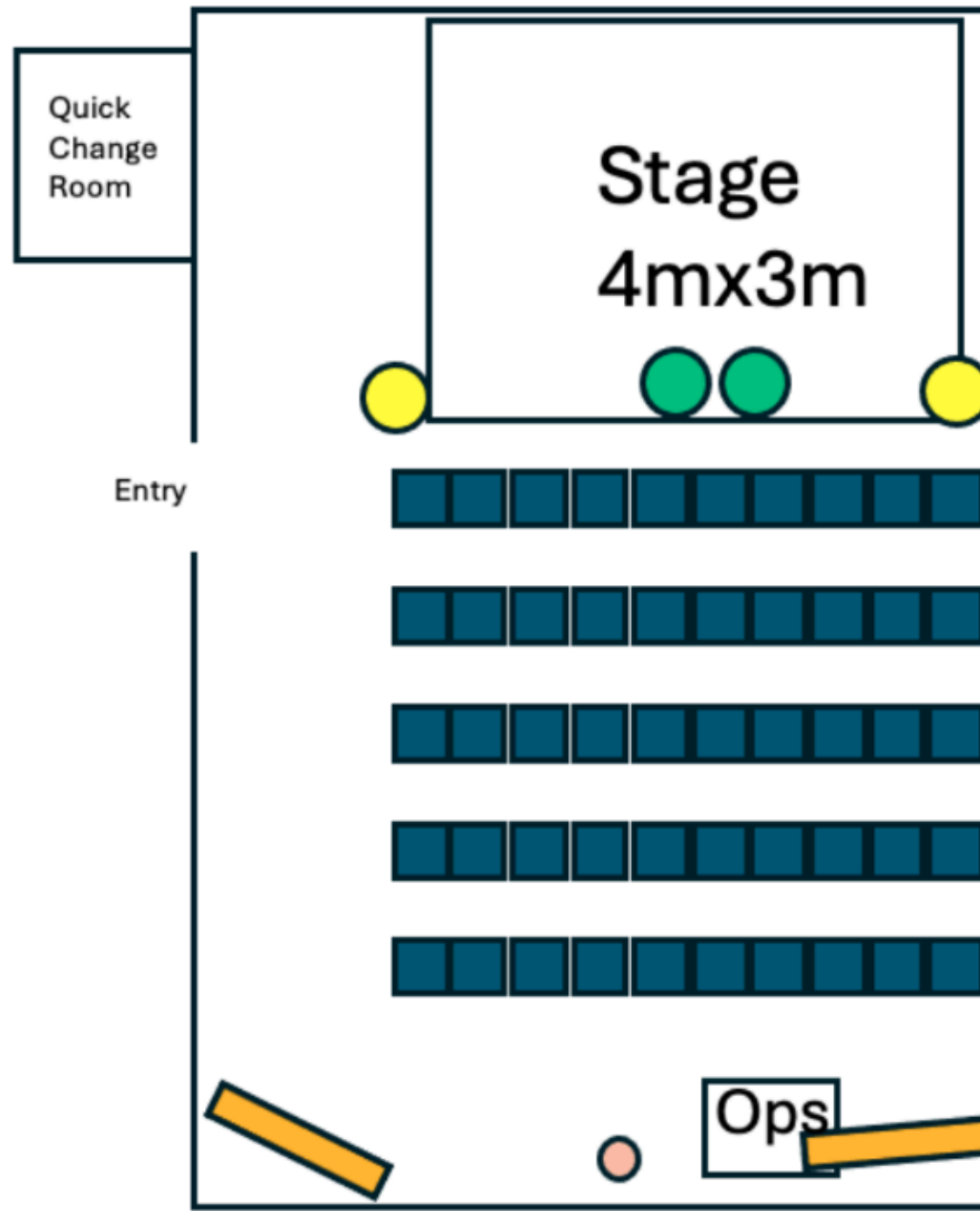
2x Behringer Active

Speaker





3x SM58 Wired Vocal Mics

+ Stands

FLOOR PLAN



VENUE MAP

	PA Speaker
	Foldback Speakers
	Lighting Tree
	15-32 Degree Profile (Spot)

PLEASE NOTE: Technical specifications are subject to change.



The West Room

The West Room is a small comedy or cabaret space that is lo fi and in half the round. It is suitable for works that want to run the space themselves and need little tech. It has a small amount of free standing lights, a blacked out performance space and audio gear. Suits stand up comedy that needs basic tech.

Seating Capacity:

35

Flat on the ground seating in a semi round

Stage Size:

2m (w) x 2m (d)

Backstage area:

There is no backstage space in this room

Projection:

Projection is not available in this space.

Hire Rate:

30% Gross Box Office vs minimum hire per performance

Technician is provided in this space at an additional rate

Lighting Equipment

1x lighting desk (manual)

2x ILED PAR64

2x Litecraft Par 56

1x LED Profile

2 x T bar lighting trees

Audio Equipment

1x Analog sound desk

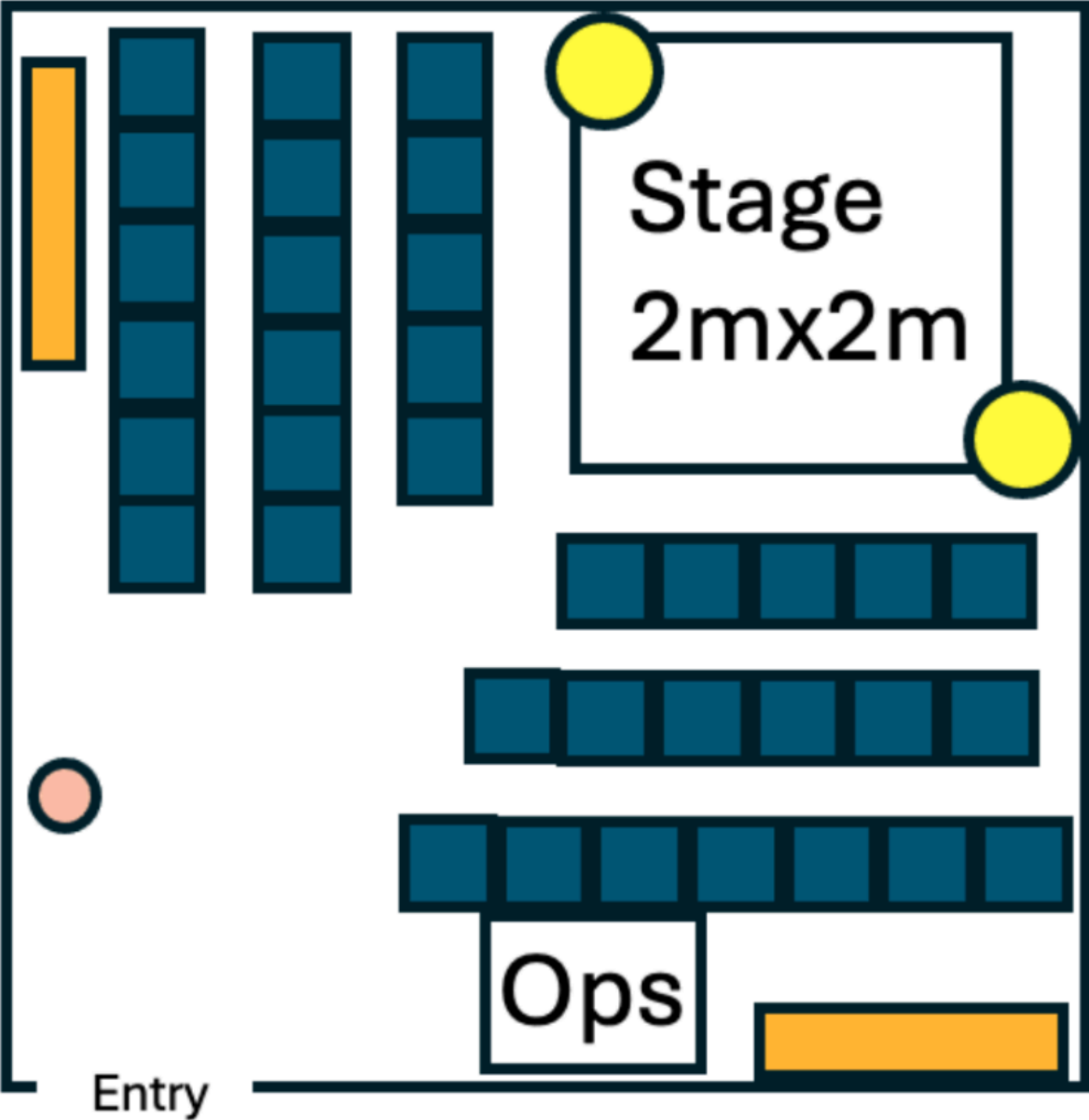
2x Behringer Active





Speaker

2x SM58 Wired Vocal Mics

+ Stands

THE WEST ROOM – FLOOR PLAN



	PA Speaker
	Foldback Speakers
	Lighting Tree
	15-32 Degree Profile (Spot)

PLEASE NOTE: Technical specifications are subject to change.

QUEER HUB

in partnership with Qtopia Sydney



PLEASE NOTE: Technical specifications are subject to change.

QUEER HUB

The Queer Hub is two existing performance spaces that Sydney Fringe curates. It is queer stories, queer artists across all genres and experience levels. Both of these spaces are fully equipped small blackboxes.

Address:

Qtopia Sydney- 301 Forbes St, Darlinghurst 2010
(Eastern Precinct)

Spaces:

The Loading Dock Theatre & The Substation

Schedule:

Shows are programmed in 60min slots for a full week run Tuesday-Saturday (5 shows) in one of three timeslots.
Available timeslots are 6:00pm, 7:30pm, & 9:00pm

Facilities:

Foyer bar in Loading Dock, green room in main building, small storage shared amongst all spaces.

**Note: The Substation is only accessible from stairs for audience and performers.



The Loading Dock Theatre

The Loading Dock Theatre is a front on small black box theatre that suits everything from theatre, cabaret, comedy, circus, dance, musicals (it can do it all). The flooring in the space is black painted masonry.

Seating Capacity:

55

Seating bank with benches and cushions with aisle up the centre.

Stage Size:

7.9m (w) x 4m (d) 4.2m (h) to rig

Backstage area:

A nice tight space on one side of the stage.

Projection:

Projection is available in this room. Projector is mounted behind 40 chair riser and onto a free standing pull up screen.

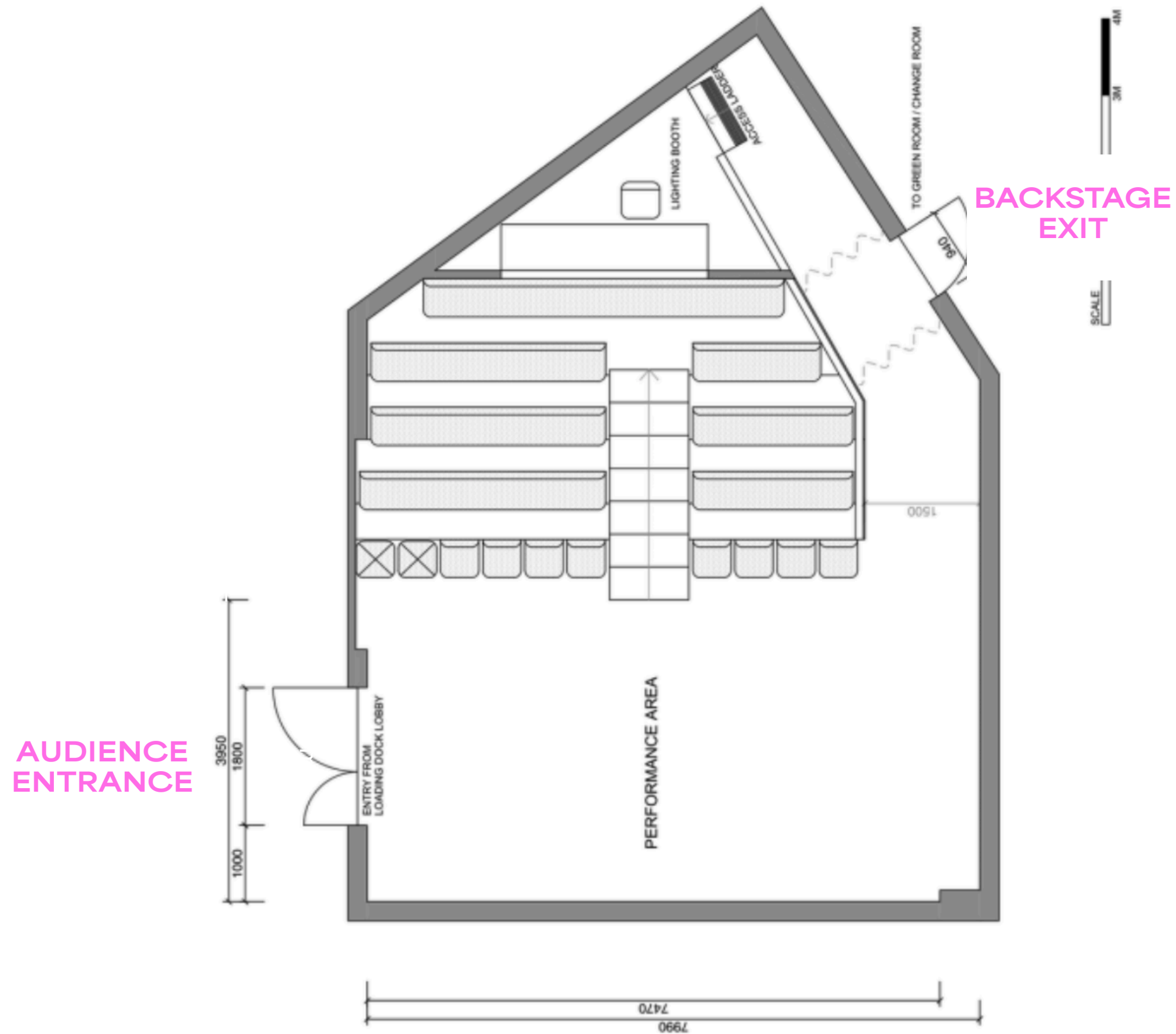
Hire Rate:

30% Gross Box Office vs minimum hire per performance

Technician is provided in this space at an additional rate

Lighting & Audio Equipment

The Venue has a set lighting rig with roughly 20 fixtures and audio. Full plans will be shared in programming conversations.



PLEASE NOTE: Technical specifications are subject to change.

The Substation

The Substation is a small front on performance space in Taylors Square a short 10m from the Qtopia Sydney building. It is a stand alone space with entrance through a set of stairs down into the space. This venue is only accessible by stairs.

Seating Capacity:

50

Seating bank with stand alone chairs and aisle up the centre

Stage Size:

7.9m (w) x 4m (d) 4.2m (h) to rig

Backstage area:

A nice tight space on one side of the stage.

Projection:

Projection is available in this room. Projector is mounted behind 40 chair riser and onto a free standing pull up screen.

Hire Rate:

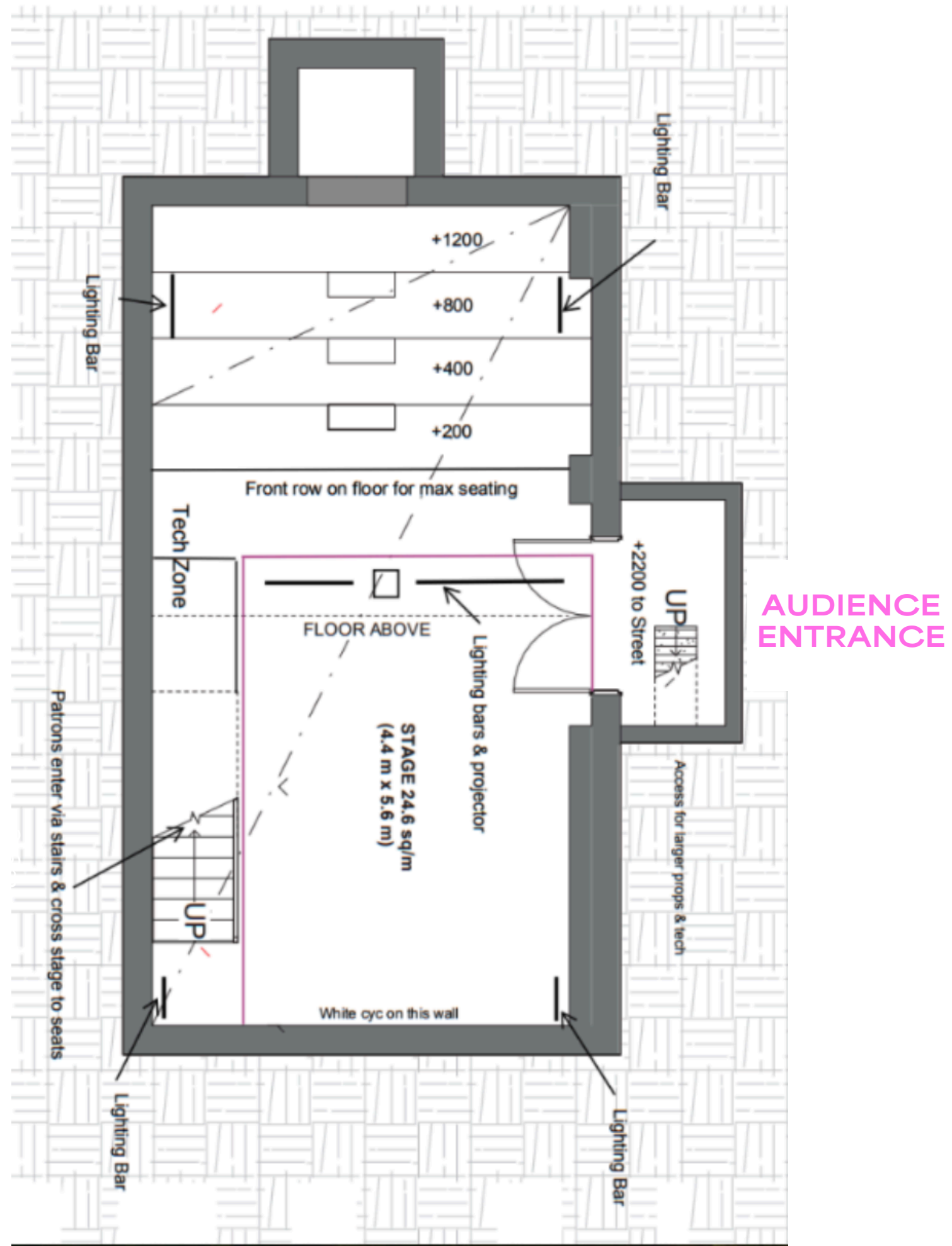
30% Gross Box Office vs minimum hire per performance

Technician is provided in this space at an additional rate



Lighting & Audio Equipment

The Venue has a set lighting rig with roughly 20 fixtures and audio. Full plans will be shared in programming conversations.



PLEASE NOTE: Technical specifications are subject to change.

OFF BROADWAY HUB

BURTON STREET
TABERNACLE

PLEASE NOTE: Technical specifications are subject to change.

OFF BROADWAY HUB

The Off Broadway Hub is for large scale shows with Broadway dreams. Large casts, bigger tech, all the pizzaz. Suits anything from musicals, dance pieces, variety shows and big band cabarets.

Address:

Eternity Playhouse- 301 Forbes St, Darlinghurst 2010
(Eastern Precinct)

Spaces:

Eternity Playhouse

Schedule:

Shows are programmed for a full week run Wednesday- Saturday (5 shows, double Saturday) in two timeslots.

Available timeslots are 6:30pm & 8:00pm, this is subject to change pending programmed works. Shows should be under 90min

Facilities:

Full foyer and bar facilities, two green rooms for artists with shower and kitchenette facility.

Off Broadway Hub

The Off Broadway Hub is for large scale shows that need significant technical gear. As this is a large capacity venue with more available gear it is a higher venue hire and would be for experienced producers who feel confident in selling.

Seating Capacity:

200

Auditorium consists of curved raked seating with the front row at stage level.

Stage Size:

11.8m (w) x 4m (d) 5.01m (h) to rig (see full plan for explanation)

Unraked stage with a Heritage Font DSC. The front edge of the stage curved to auditorium seating.

Backstage area:

Access to stage from dressing rooms is located either side of the front upstage, through PS via loading / scenery dock, or OP via the exit door.

Hire Rate:

30% Gross Box Office vs minimum hire per performance

Technician is provided in this space at additional fee



Lighting & Audio Equipment

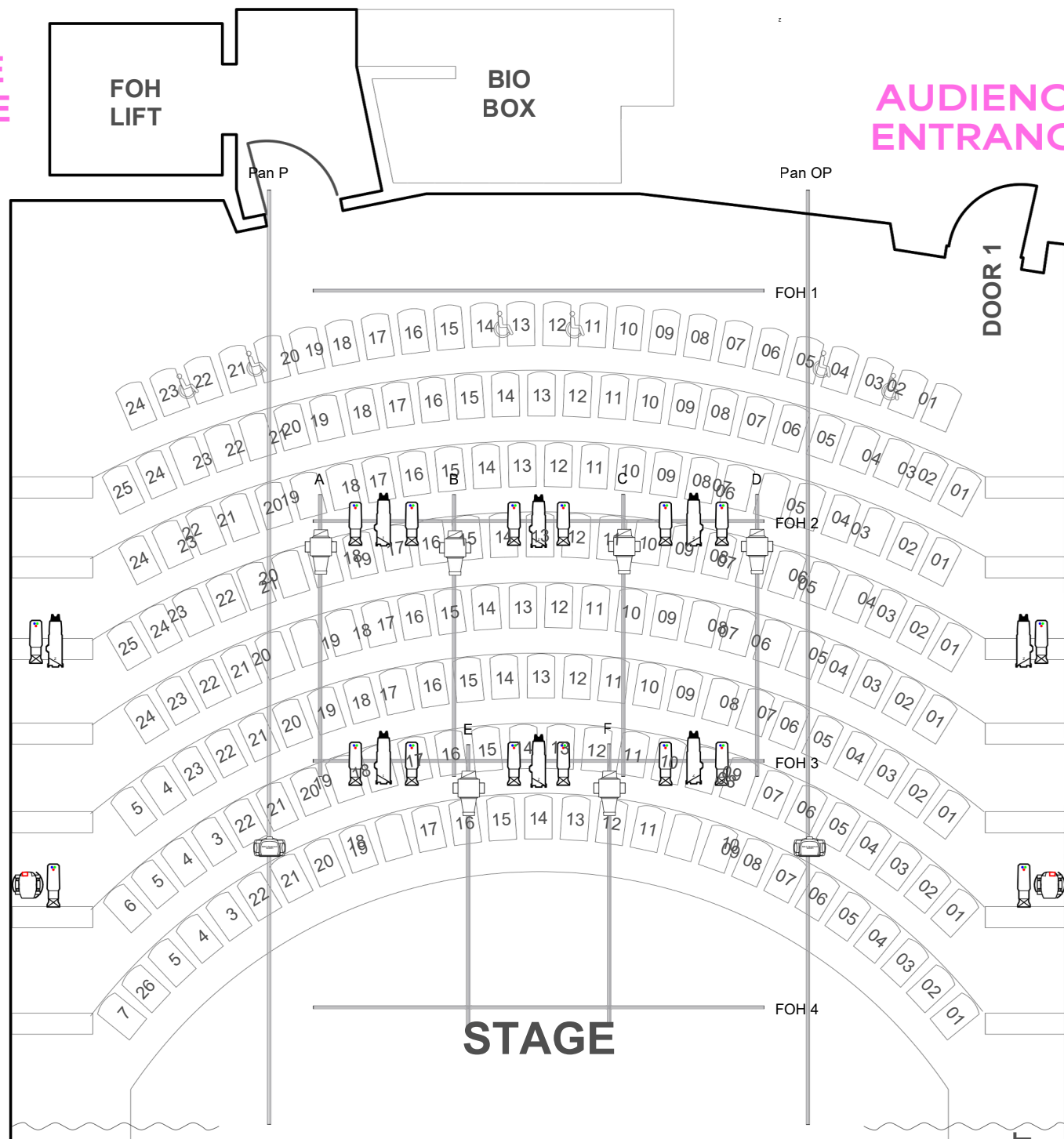
The Venue has a set lighting rig with comprehensive fixtures and audio. Full plans will be shared in programming conversations.

**AUDIENCE
ENTRANCE**

**FOH
LIFT**

**BIO
BOX**

**AUDIENCE
ENTRANCE**



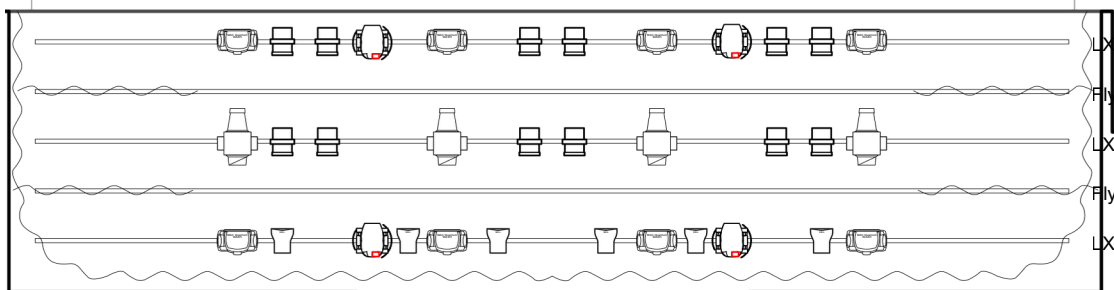
DOOR 1

STAGE

**BACKSTAGE
EXIT**

**BACKSTAGE
EXIT**

PLEASE NOTE: These are previous season plans of Off Broadway and lighting and sound gear may alter but it gives an indication of set up



FOOL'S PARADISE

FOOL'S PARADISE

ELIXIR REVIVED



MAGIC MIKE MEETS
ARQUE DU SOLEIL
29 AUG - 12 OCT | 7:00PM
BOOK NOW
WWW.SYDNEYFRINGE.COM



BUBBLE SHOW
IN SPACE
WEEKLY AWARD
BEST KIDS SHOW
PERTH FRINGE 2023

BOOK NOW
WWW.SYDNEYFRINGE.COM



WEEKLY AWARD
BEST KIDS SHOW
SYDNEY FRINGE 2024
WEEKLY AWARD
BEST KIDS SHOW
ADILAIDE FRINGE 2024
WEEKLY AWARD
BEST KIDS SHOW
PERTH FRINGE 2023



TEARDROPS
ON MY DILDO 2
Lube Me Alone
1-4 SEPTEMBER
7:40PM

BOOK NOW
WWW.SYDNEYFRINGE.COM

SYDNEY FRINGE FESTIVAL

PLEASE NOTE: Technical specifications are subject to change.

FOOL'S PARADISE



Fool's Paradise, in partnership with The Entertainment Quarter, is the stop for all large scale circus, variety, cabaret, music comedy and Fringe Kids. These are high capacity venues for experienced producers with rigging capability.

Address:

Entertainment Quarter- 122 Lang Road, Moore Park
(Eastern Precinct)

Spaces:

The Vault and The Bunker

Schedule:

Shows are programmed for a full week as a preference from Tuesday-Sundays. Shows will be programmed in conjunction with the Head First Acrobat team. We program both adult and Fringe Kids works. Fringe Kids programming will occur on weekends and during the school holiday.

Facilities:

Fool's Paradise will have a bar and food facilities onsite for audience as well as a shared backstage area.

The Vault

The Vault is the larger of the two spaces at Fool's Paradise and is suited to large scale circus shows, variety, music and cabaret. The venue is a dome shape with a raised stage and semi round audience seating. This venue has rigging for aerial acts and can have fire acts.

Seating Capacity:

370

Seating in semi round with a raised stage. The venue has the capacity for cabaret seating

Stage Size:

4.8m (w) x 9.6m (d)

Raised mega deck stage 1000mm high

Aerial point height to stage 7.75m

Rigging:

The Vault has 2x single point drop in lines, rated to 150kg (2 performers) Both lines are located centre stage approx. 400mm apart, and 8m stage to max. height.

These can both be used for counter-weighting.

Hire Rate:

30% Gross Box Office split with an upfront venue deposit

Technician will be provided with the space



Lighting & Audio Equipment

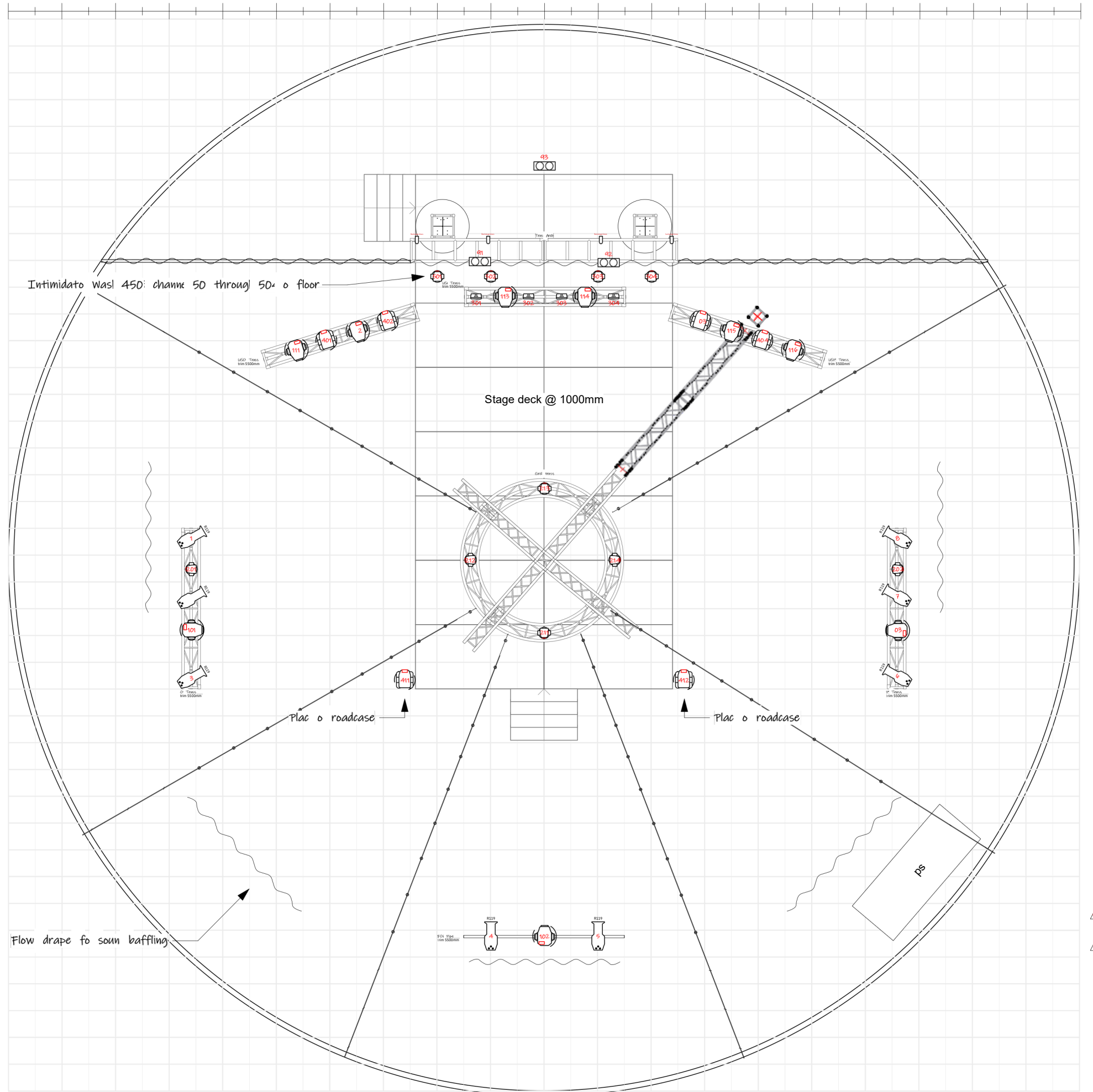
The Vault has comprehensive audio and lighting capabilities. Full specs will be shared in programming conversations



The Vault



PLEASE NOTE: These are previous season plans of The Bunker and lighting and sound gear may alter but it gives an indication of set up



HAZARD
FESTO

The Bunker

The Bunker is a small version of The Vault but with a smaller capacity. It is more intimate and perfect for cabaret, music, comedy, kids and family or more intimate shows.

Seating Capacity:

220

Audience are flat on floor in semi round

Stage Size:

4.8m (w) x 6m (d)

Raised mega deck stage 600mm high

Aerial point height to stage 5m

Rigging:

1 point in the Bunker, maximum load 150 kilos (two people, dynamic, swining).

Hire Rate:

30% Gross Box Office split with an upfront venue deposit

Technician will be provided with the space

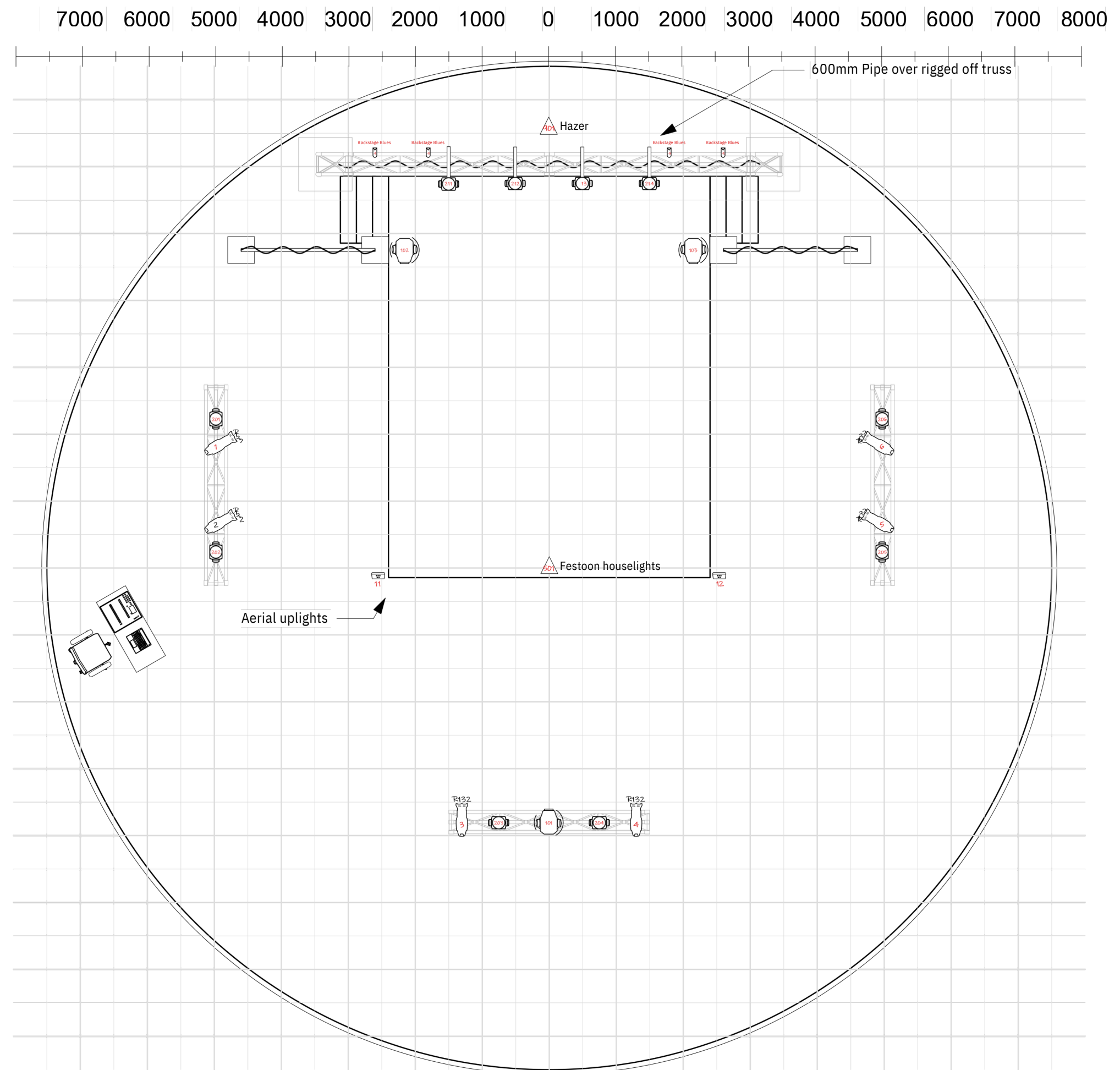


Lighting & Audio Equipment

The Bunker has comprehensive audio and lighting capabilities. Full specs will be shared in programming conversations



The Bunker



PLEASE NOTE: These are previous season plans of The Bunker and lighting and sound gear may alter but it gives an indication of set up

TIMELINE

Fringe Registration period

2 March- 30 March

Programming Conversations

The programs team will review all registrations and reach out for a chat about your show
Month of April

Hub Offers

Offers for all Hub venues will be made by 8 May

All Marketing Material, Contracts and Eventotron profiles finalised

29 May

Please be patient with us as we work through programming all of the venues and working through artist needs.

If you are unsuccessful in being programmed at a Hub we will provide alternative Satellite venue options and do introductions so you don't miss out on being in Sydney Fringe.

CONTACT



Sydney Fringe Programs team can be reached on the below information:

Artists Hotline: 0402 571 004

Artists email: artists@sydneyfringe.com

If you need to speak with our First Nations team you can reach out to Erica Brennan to organise a call.

Erica@sydneyfringe.com